



Saturday, January 31, 2026

Juarez-Lincoln HS Gymnasium (La Joya ISD)

A TECA sanctioned contest hosted by the Juarez-Lincoln HS Band & Colorguard



Dear Directors,

Welcome to Juarez-Lincoln High School! We are excited to host you at our campus and we hope you have a positive and enjoyable experience at our event. Please take a moment to read through this packet which includes all necessary logistical information for directors, drivers, students, parent volunteers and spectators.

**Juarez-Lincoln High School is located at:
7801 W Mile 7 Rd. Mission, TX 78574**

Included in this packet:

1. Directions and Parking
2. Pre-Performance/Unit Check-In
3. Contest Flow
4. Awards Ceremony
5. Contact Information

Parking and Loading/Unloading: *(There will be volunteers and signs to help direct drivers.)*

Trailer/Box Trucks will enter the school on 107 Rd through the guard house gate and park in the East staff parking lot. There will be a staff member directing your driver. Please see the map.

Buses will enter on 107 through the 2nd gate (center gate) to drop off units in front of the school by the flag poles. (Please see the map.) Buses will then park in the Band practice field. After Winds/Percussion contest, overflow parking for buses will be the East staff parking lot where trailers parked for the morning block. Please see the map.

Spectator parking: Entrance to the gym parking lot for spectators is on the West side of the school on Texan Rd. (see map)

Pre-Performance/Unit Check In

Winds/Percussion Units:

Check-In will be located at the front of the school by the “Performing Arts” glass doors. Winds and Percussion will check in at the table and an official guide will then guide you through the entire contest.

After Check-In, proceed to the trailer parking lot for unloading. There is a large grass area next to the parking lot for warm up as well as large side walk areas for warm up. (See map)

Props/floors will stay with you in warm up areas. You will enter the gym through the back of the school. (See Map for flow) A guide will be with you.

Performers, up to 10 crew members, 3 directors and transportation personnel will be given a free pass access to the contest. (wrist bands) Additional wrist bands for students will cost \$8.00.

All equipment will be inspected. Ensure everything is properly taped and padded per TECA and WGI rules. Once checked in, units may proceed to the cafeteria to your table or proceed to your unloading/warm up area.

Guard Units:

All is the same as above.

Prop/Floor storage will be the hallway between the Art rooms and the cafeteria. Please help us by putting your props/floor against the wall to keep the center area clear for passage.



Contest Flow (See Maps)

Winds:

Please report to the ready table in the cafeteria 10 minutes prior to your official timed warm-up. Your guide will lead your unit to the outdoor warm-up area. (If you choose to go straight to an outdoor warm-up area, please let your guide know at the check-in table.) After warm-up, your unit will be led to the performance gym through the back of the school. (See Map) After your performance, you will exit into the small gym where you can fold your floor. You will then exit the gym and follow the same route back to the parking lot for loading. You may enter the performance gym to watch other competing groups through the main spectator entrance on the visitor side. You will be asked to show your wrist band.

Percussion:

Your guide will meet you at your warm-up area and lead your unit to the performance gym. After your performance, you will exit into the small gym where you can fold your floor. You will then exit the gym and follow the same route back to the parking lot for loading. You may enter the performance gym to watch other competing groups through the main spectator entrance on the visitor side. You will be asked to show your wrist band.

Critique room for Winds/Percussion will be in the LIBRARY.

Guard:

Please report to the ready table in the cafeteria a few minutes prior to your official timed warm-up. Your guide will lead your unit to the Dance Room for body warm up. After body warm up, your guide will take your unit down the hall to the band hall for equipment warm-up. Once your time expires, you will be led to the Art hallway to pick up your floor/props and to the performance gym. After your performance, you will exit into the small gym where you can fold your floor. You will then exit the gym and make your way to the cafeteria. We encourage you to load your floor/props as soon as you are done to avoid overflow in the prop area. You may enter the performance gym to watch other competing groups through the main spectator entrance on the visitor side. You will be asked to show your wrist band.

Post-Performance/Award Ceremony

Captains will report to the small gym to line up for the retreat.
All unit members will sit at the visitor's side during awards ceremony.

Concessions

Concessions will be available to everyone at the cafeteria and at the gym. Outside food will not be allowed at the contest.

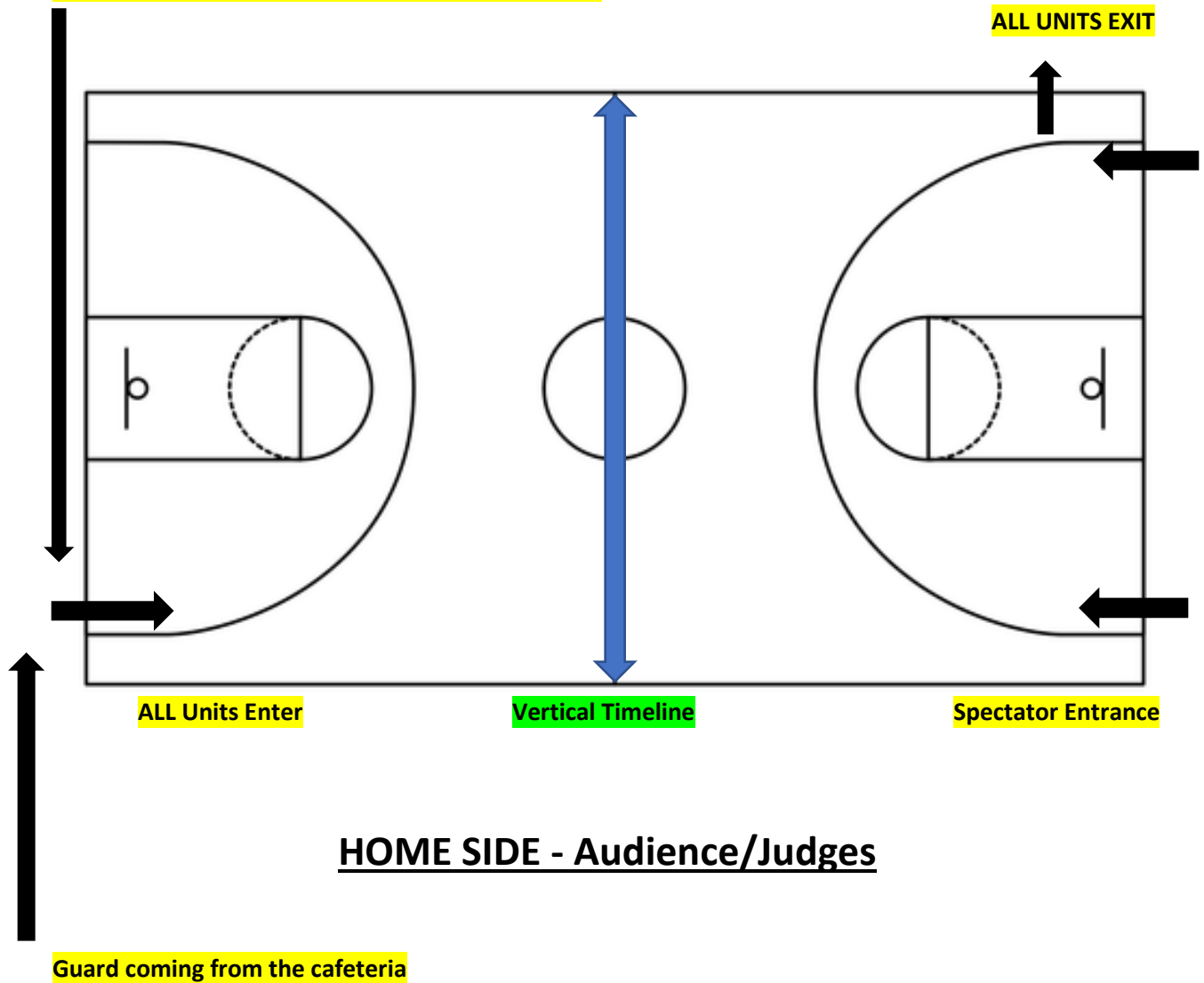
Admission: \$8 Students (ages 3-18) and \$10 Adults

Should you have any questions, please contact me at (956)648-0499 – Mrs. Z. Banda, JLHS Director of Bands

Visitor Side (Participant Seating)

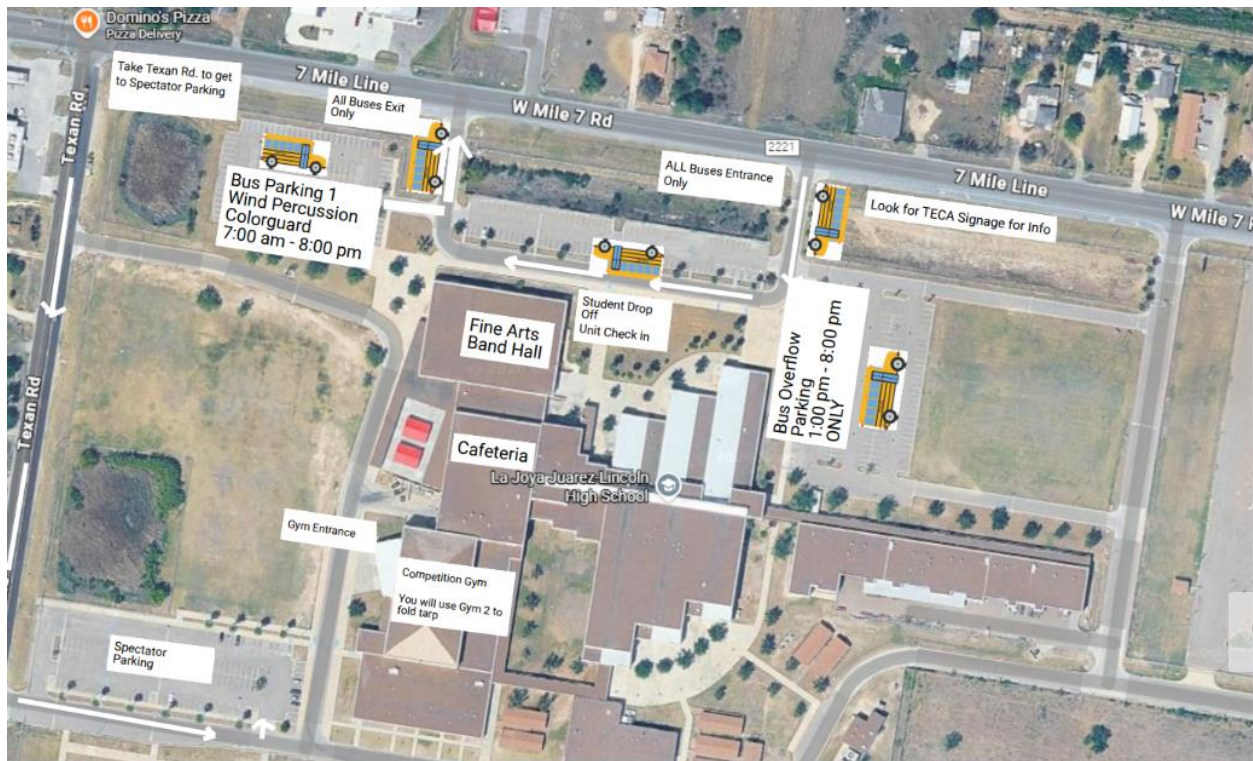
Percussion/Winds coming from outside parking lot

ALL UNITS EXIT



HOME SIDE - Audience/Judges

GUARD PARKING AND FLOW MAP



WINDS & PERCUSSION PARKING & FLOW MAP

